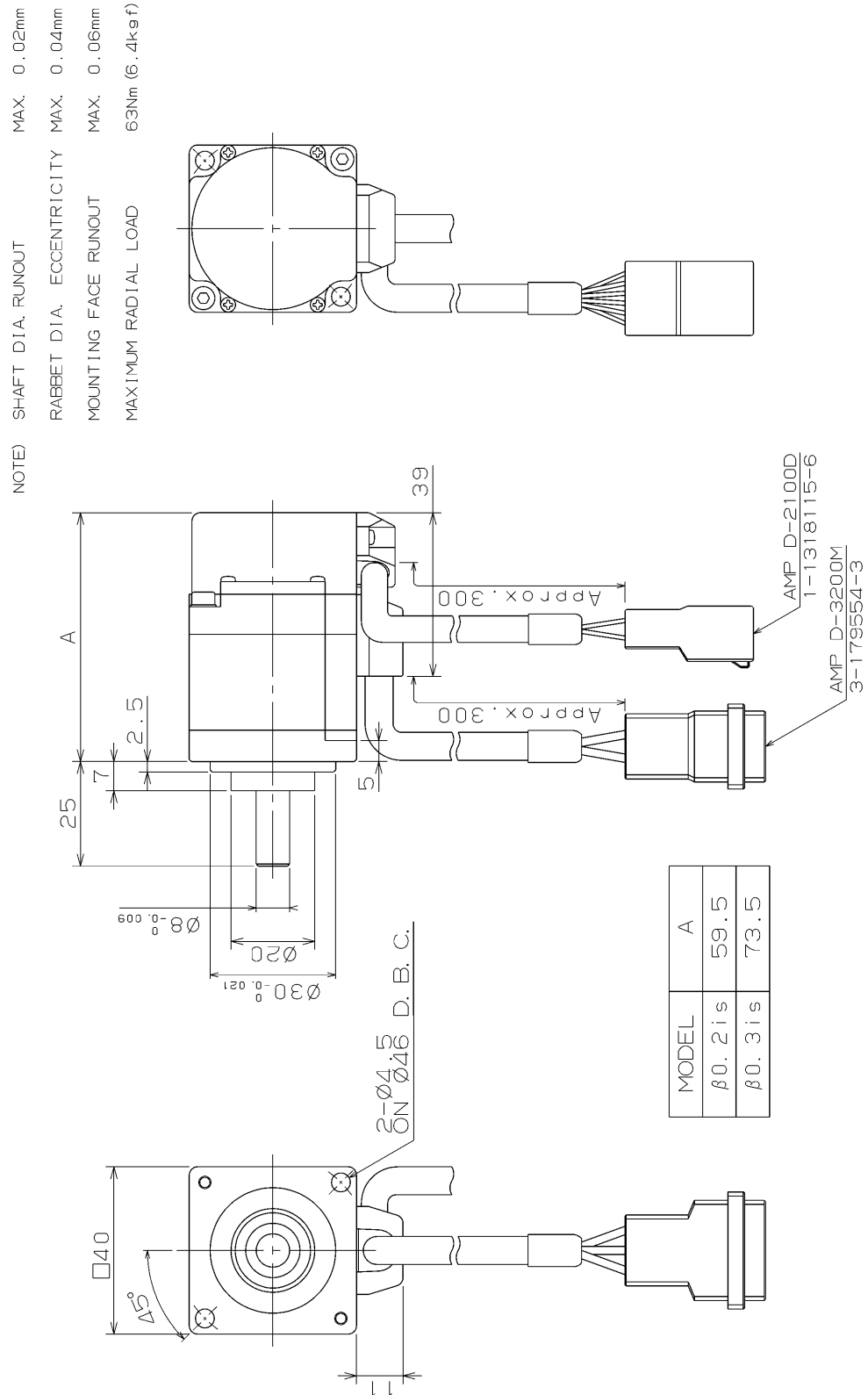
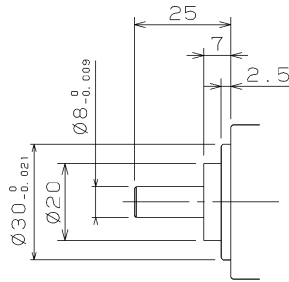


**Fig. 3(a) Models  $\beta$ 0.2is and  $\beta$ 0.3is**



**Fig. 3(c) Models  $\beta$ 0.2is and  $\beta$ 0.3is (shaft option)**

STANDARD:  
STRAIGHT SHAFT  
A06B-011□-B103  
-B403



OPTION:  
STRAIGHT SHAFT  
WITH KEYWAY  
A06B-011□-B203  
-B503

